



# LABORATORY LINES

## MICROSCOPES



**Kalstein**®

A different accompaniment, at your service





# Kalstein®

A different accompaniment, at your service

OUR SERVICES

## Benefits and Support

In Kalstein France, we take care of the full satisfaction of our customers, that is why we provide value-added services of the highest level based on our experience.



### Online Inductions and Trainings

In any part of the world, receive your induction or training from our specialized team of engineers



### Quick Response

Our work team is always available to response all your consults or questions, in order to support you in any situation.



### #Letsgivemore ♥

Thanks to your purchase, a donation will be made to a non-profit foundation that fights against breast cancer and helps most vulnerable communities.



### Technical Support

Enjoy of personalized advice for the correct preventive and corrective maintenance of your equipment, thanks to Kalstein's manuals and articles, special catalogues and video tutorials.



### Delivery Logistics

We take care of all the necessary logistics for the dispatch of your goods, whether is by sea, land or air.



### Kalstein Worldwide

With more than 25 years growing with our customers, Kalstein's multiformat and modern content, is now present in more than 10 countries and increasing.





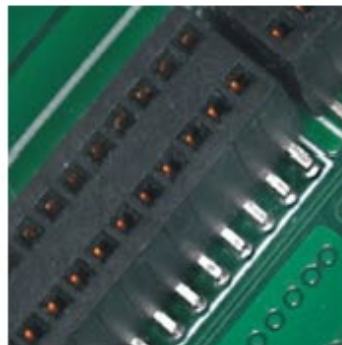
# YR03815

HDMI+USB+SD Digital Camera, 5.0M



5.0M,  
1/2.5" CMOS,  
1080P,  
Uncompressed  
Resolution Output

HDMI+USB2.0  
+ SD Card



HDMI Panel  
Control By Mouse,  
With C-Mount



#Letsgivemore ❤️  
Thanks to your purchase, a donation will be made to a non-profit foundation that fights against breast cancer and helps most vulnerable communities.



All rights reserved © KALSTEIN France S. A. S.,  
2 Rue Jean Lantier • 75001 Paris •  
+33 1 78 95 87 89 / +33 6 80 76 07 10 •  
<https://kalstein.eu>  
KALSTEIN FRANCE, S. A. S





## Camera Specification



### 5.0M CMOS

Using A New 5-megapixel Cmos Image Sensor. Able To Present The Details Of The Subject More Clearly, Providing You With Superior Image Quality

### Built-in Mouse Control

It Can Be Directly Connected To The Display Via An Hdmi Cable, Which Is Convenient To Operate; Compared With Traditional Usb Cameras, The Image Transmission Efficiency Is Increased By 4 Times!



### Highly Intelligent

With High-quality Color Reproduction Capabilities, The Image Seen On The Monitor Is Equivalent To The Image Viewed Through A Microscope, And The Uncompressed Raw Data Transmission Ensures The Authenticity Of Scientific Images; The Built-in Algorithm Can Automatically Analyze And Adjust The Image Information, Regardless Of The Biological Manifestation Of The Field Is Polarized Light And Crystal Imaging Of The Dark Field, And Almost No Manual Adjustment Of Parameters Is Needed To Obtain The Desired Effect.



### #Letsgivemore ♥

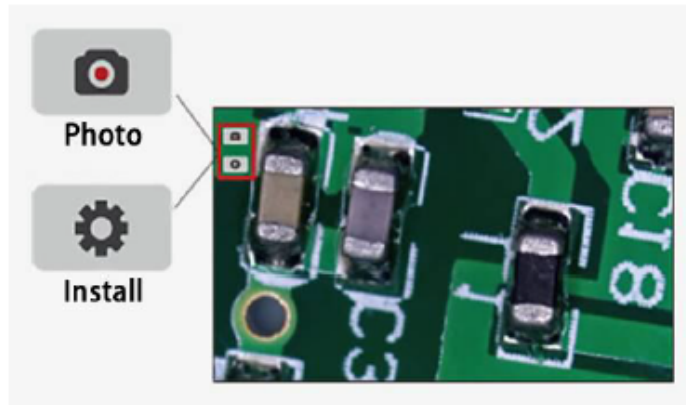
Thanks to your purchase, a donation will be made to a non-profit foundation that fights against breast cancer and helps most vulnerable communities.



All rights reserved © KALSTEIN France S. A. S.,  
2 Rue Jean Lantier • 75001 Paris •  
+33 1 78 95 87 89 / +33 6 80 76 07 10 •  
<https://kalstein.eu>  
KALSTEIN FRANCE, S. A. S



## Software Specification

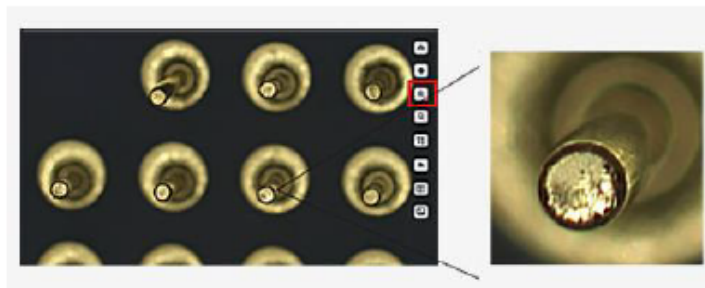


### Software With Only Two Buttons

Conveniently, In Fact, You Can Do It With One Click. The Start Screen Has Only Two Buttons, One For Taking Pictures And The Other For Entering The Setup Menu. It's As Simple As A Smartphone iPhone.

### 1080P Video

Click The Button To Shoot 1080p 15fps Video. The Video File Is Stored In A High-speed SD Card, And You Can Also Play It Back Directly.



### ROI Function Zoom In To See Details

There Is A Row Of Image Operation Buttons On The Right Side Of The Screen, Which Can Flip And Rotate The Image. The ROI Zoom Function Can Help You Zoom In On The Image And See The Details.

### Setting The Exposure

Based On Automatic Exposure, For The First Time, The Hdmi Camera Also Has A Complete Exposure And Gain Setting Function. You Can Set The Exposure Time From 1ms All The Way Up To 10 Seconds. 20 Gains Are Adjustable. Compared With The Previous Generation Of Truechrome, Which Can Only Be Automatically Exposed, It Is Greatly Improved In Convenience. The Sensitivity Is Improved By More Than 300 Times.



### #Letsgivemore

Thanks to your purchase, a donation will be made to a non-profit foundation that fights against breast cancer and helps most vulnerable communities.



All rights reserved © KALSTEIN France S. A. S.,  
2 Rue Jean Lantier • 75001 Paris •  
+33 1 78 95 87 89 / +33 6 80 76 07 10 •  
<https://kalstein.eu>  
KALSTEIN FRANCE, S. A. S



## Powerful Functions

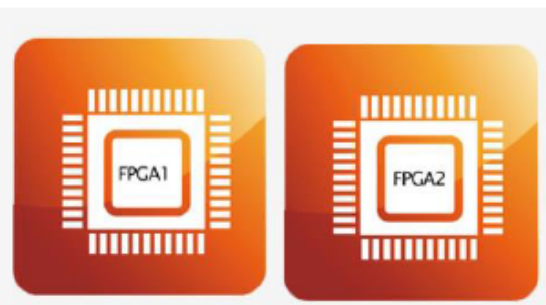
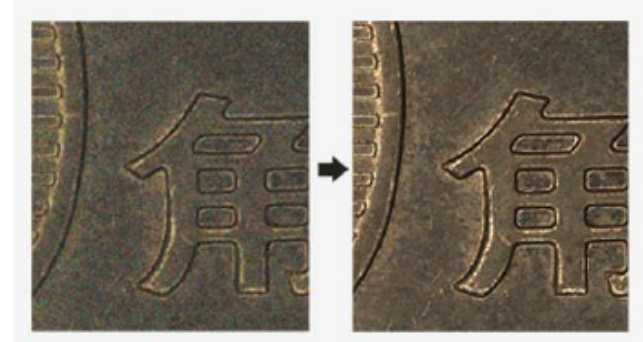


### Image Contrast Function

After Entering The Settings, You Can Select The Image To Be Compared. You Can Even Move The Position Of The Image And Select The Roi Area And The Dynamic Image For Comparison.

### 3D Noise Reduction

The Longer Exposure Time Brings Increased Noise, The 3D Noise Reduction Function Of A59.3815 Keeps The Picture Clean And Clear. The Comparison Chart On The Right Shows The Powerful Effects Of 3D Noise Reduction.

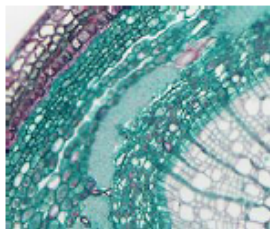


### FPGA Dual-core Processor

Innovative FPGA Dual-core Processor, FPGA1 High-definition Image Quality Processor And FPGA2 Image Output Controller Are Adopted To Ensure The True Reproduction Of High-speed And High-quality Images.

## Case Show

Plant Cell



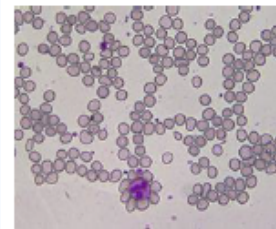
Medical Pathology



Drosophila Effect



Blood Cells



### #Let'sgivemore

Thanks to your purchase, a donation will be made to a non-profit foundation that fights against breast cancer and helps most vulnerable communities.



All rights reserved © KALSTEIN France S. A. S.,  
2 Rue Jean Lantier • 75001 Paris •  
+33 1 78 95 87 89 / +33 6 80 76 07 10 •  
<https://kalstein.eu>  
KALSTEIN FRANCE, S. A. S.





## Camera Specification

Sensor	CMOS	Sensor Size	1/2.5"
Dynamic Resolution	5MP, 1920x1080	Static Resolution	5MP, 2592x1932
Frame Rate	15fps @USB2.0 15fps @HDMI	Video Recording	15fps @PC 15fps @SD Card
Exposure Mode	Auto/Manual	Exposure Time	0.002s-10s
Output Interface	USB2.0,SD Card, HDMI	Setting	White Balance, Exposure Time, Noise Reduction, Gain, Gamma, Wide Dynamic
White Balance	Auto/Manual	Optical Port	Standard C-Mount
Built-in Software	Cloud 1.0 Ver	PC Software	Mosaic V2.1
Size	90.7x78x70.8(mm) Weight 400(g)		
Compatible OS	WindowsXP Or Above, Mac		

## Retina Screen Features(Optional)

Resolution	1080P(1920x1080)	Display Type	IPS-Pro
Screen Size	11.6"	Aspect Ratio	16:09
Brightness	320cd/m2	Static Contrast Ratio	1000:01:00
HDMI Port	1	Power Supply Type	12V, 2A
Size	282.0x180.5x15.3(mm)	Weight	600(g)

## Capture V2.0 Feature Function

### Modular Function Configuration

Intelligent 12-bit ISP Color Reproduction

Real-time Depth Of Field Fusion (option)

Real-time Image Stitching (option)

Real-time Fluorescence Image Synthesis And Editing

HDR Image Synthesis

Micro-imaging-based Intelligent Automatic Exposure

Intelligent Flat Field Correction Based On Dynamic Calculation

Supports Single Shot, Delayed Camera

Automatic Video And Delay Video Generation

Output Format Selection

User Parameter Group Save And Load

Dynamic \ Static Measurement

Layered Measurement

Customize Measuring Gauges, Layers, Precision

Customize Image Naming, Style, Save Location

Implements Drawing: Points, Lines, Rectangles, Polygons, Circles, Arcs, Angles

Data Export As Txt Or Excel

Report Generation And Printing



#Letsgivemore 

Thanks to your purchase, a donation will be made to a non-profit foundation that fights against breast cancer and helps most vulnerable communities.



All rights reserved © KALSTEIN France S. A. S.,  
2 Rue Jean Lantier • 75001 Paris •  
+33 1 78 95 87 89 / +33 6 80 76 07 10 •  
<https://kalstein.eu>  
KALSTEIN FRANCE, S. A. S





A different accompaniment, at your service

## WITH THE ACQUISITION OF A KALSTEIN EQUIPMENT

YOU MAKE A CONTRIBUTION TO:

#LETSGIVEMORE 



Fundación Jacinto Convit

<https://www.jacintoconvit.org/>



<https://onetreepanted.org>



Humatem

Solidarité et coopération biomédicale

<https://www.humatem.org/>



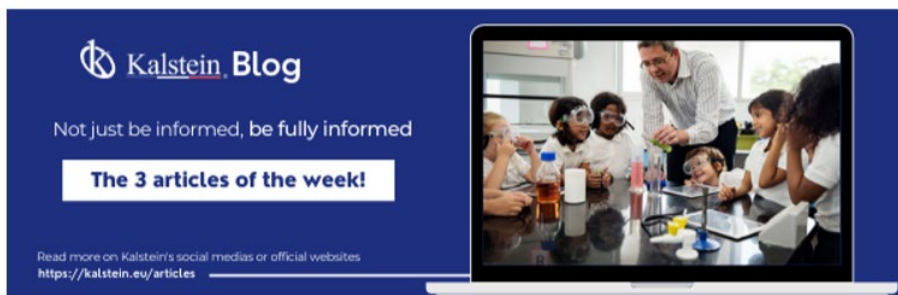
MANIAPURE FOUNDATION USA

<https://www.maniapurefoundation.org/>

**Thank you!**



**Articles Kalstein**  
(Social Networks and Official Websites)



**Kalstein Blog**  
Not just be informed, be fully informed

**The 3 articles of the week!**

Read more on Kalstein's social medias or official websites  
<https://kalstein.eu/articles>



**1**  
Read this ARTICLE NOW

**How does the climate affect your microscope?**

microscope is an instrument that allows observing and measuring objects that are too small to be seen with the naked eye. This is achieved through a complex system of lenses and mirrors, which form

**Kalstein Blog**

**Article of the week:**  
How does the climate affect your microscope?

Read more on Kalstein's social medias or official websites  
<https://kalstein.eu/articles>



**2**  
Read this ARTICLE NOW

**What is the importance of the laboratory refrigerator?**

refrigerator is a device that is one of the most common pieces of equipment used in laboratories. It is a controlled environment (refrigerated space), various fluids and substances

**Kalstein Blog**

**Article of the week:**  
What is the importance of the laboratory refrigerator?

Read more on Kalstein's social medias or official websites  
<https://kalstein.eu/articles>

**Kalstein Training Videos**  
(Youtube Channel and Official Websites)



**Kalstein France - Jacinto Convit Foundation / Alliances**  
23 views • 3 years ago



**Kalstein's Microscopes**  
445 views • 1 week ago



PARIS - FRANCE  
**HEADQUARTER**  
2 Rue Jean Lantier  
75001 Paris - France

**Tlf:** +33 (0) 01 78 95 87 89  
**Cel:** +33 (0) 6 80 76 07 10  
[sales@kalstein.eu](mailto:sales@kalstein.eu)

<https://kalstein.eu/>  
<https://www.kalstein.fr/>

